

ETA T Series Lead Free Reflow Oven



Compact Body,
Precise Process.

Introduction:

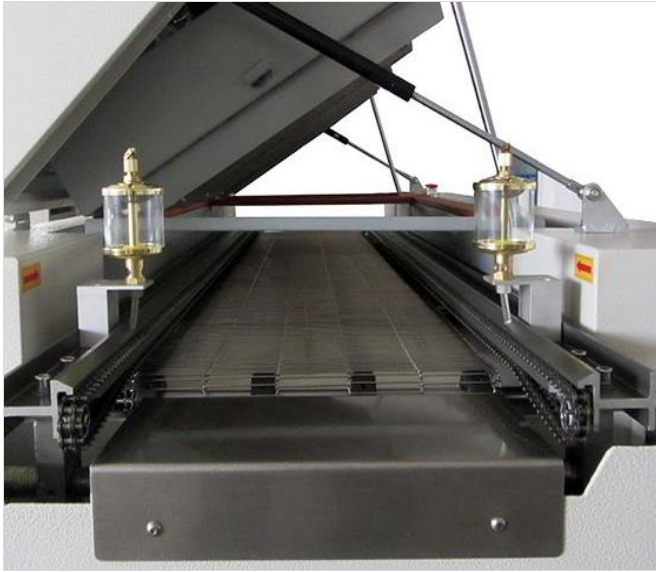
1. Control System: Touch screen PLC control system, accurate temperature control and more stable, ensures temperature stability rate to be more than 99.99%.
2. First-class heating module, the effective utilization and thermal compensation efficiency, temperature control accuracy $\pm 1^{\circ}\text{C}$.
6. Products comply with CE, CCC, other standards and specifications.
7. User-friendly design: fault detection (such as heaters abnormal alarm, etc.), regular maintenance reminders, the economy functions and tool-free maintenance, reducing equipment failure rates.
8. Heating module: Transverse reflow design makes temperature from each zone is not influenced by neighbour to ensure accurate temperature curve, while ensuring a high production capacity and heat exchange capacity to achieve high adaptability (to meet the soldering of automotive, communications, computers and mobile phones consumer electronics.)
9. Hot air motor with independently inverter controlled, set operating frequencies depending on different technology to meet a variety of lead-free processes.
11. Main parts: Imported main parts ensure equipment runs smoothly and lower the maintenance cost.
13. Closed-loop transmission speed control systems, transportation accuracy $\pm 2\text{mm/min}$, ensuring stable transmission speed.
14. Central support is optional.

TOP Advantage:

1. Simple: combined with advanced international concepts, easy to understand, easy to learn, easy to maintain.
2. Expertise: learn imported reflow oven's advanced design concepts, and the machine core components are using imported top brands.
3. Hedging: Import hardware configuration, low failure rate in production, more than a decade service life.
4. Safety: Based on the general rules of international design, close to imported reflow rating, the highest security level.
5. Stable: mature software, hardware and top production processes ensures stability of each equipment.



Features:



Design concept

Simple design, convenient for customers, easy to learn, easy to maintain, low failure rate and increase durability, and cope with various SMT processes.



Transportation system

The rail and mesh is standard with automatic oiling, rail hardening treatment to ensure that is not deformed, the small cycle chain design ensures the smooth transportation.



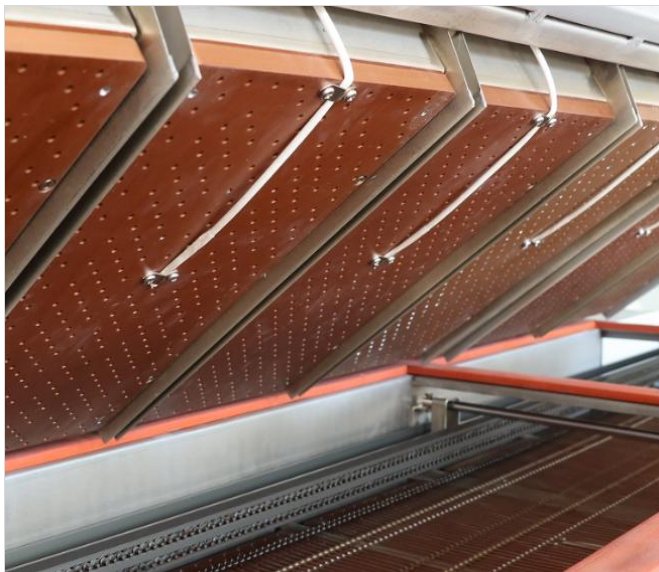
Chamber system

Adopting separate design, the upper cover and furnace are easy to open, which is convenient for inspection and maintenance. The internal and external double insulation structure ensures the thermal insulation of the machine.



Hot-air system

Imported high-temperature motor, anti vibration structure, high-temperature motor and connecting wire adopt plug-in design, easy to maintain, built-in insulation cotton, to ensure the thermal insulation of the oven.



Heating system

Independent temperature control, heating wire built into the air outlet plate, using large size aluminum plate material, special process treatment, high temperature uniformity, to deal with various processes.



Operating system

Touch screen operation, operation in accordance with ergonomic design, Chinese and English optional, extended design can flexibly adjust the position of the operation panel, with temperature profile interface.



Control system

The overall design conforms to CE standard, the overall layout is reasonable, and the core components are imported parts, which ensure the accuracy and stability of the machine operation, and the identification is clear and convenient for subsequent maintenance.

Specification:

Specifications	T4	T6
Dimension (L*W*H)mm	2000x890x1250	2550x890x1250
Weight	Approx.550KG	Approx.850KG

Number Of Heating Zones	Up4/Bottom4	Up6/Bottom6
Length Of Heating Zones	980mm	1550mm
Power For Warm Up	20KW	26KW
Power Consumption	5KW	7KW
Transmission Agent	Mesh+Rail	
Max.Width Of Mesh	330mm	
Max.Width Of PCB(Rail)	300mm(400mm Option)	
Control System	Touch Screen+PLC	
Rail Width Adjustment	M(Option:Auto)	
Conveyor Direction	L→R (Option: R→L)	
Fixed Rail Side	Front Fixed (Option:Rear Fixed)	
Exhaust Volume	10M ³ /minx2 Exhausts	
Warming Time	Approx.15 minute	
Temp. Setting Range	Room Temp.-- 350℃	
Oil Supply	M(Option:Auto)	
Cooling Method	1 Zone,Fan (Option:Forced-Air Motor)	
Components Clearance	Top/ Bottom is 30mm	
Temperature Deviation on PCB	± 1.0℃	
Conveyor Height	900+/-20mm	
Center Support	Option	
Conveyor Speed Range	300~1500mm/min	
Temperature Control Method	PID + SSR	
Electric Supply Required	3phase,380V 50/60Hz	

Materials List :

No.	Item	Brand	Original
1	Touch screen	Touchwin	Taiwan
2	PLC	Siemens	Germany
3	Solid relay	Carlogavazzi	Switzerland
4	Contactore	Schneider	France
5	Transmission motor	Panasonic	Japan
6	High Temp. Motor	Sanyue	Taiwan
7	Heating wire	Hotset	Germany
8	Guide rail	ETA	China
9	Chain& Chian shackle	KMC	Taiwan
10	Heat cotton	RockWool	Germany
11	Frequency converter	Schneider	France
12	Button	Schneider	France
13	High Temp. Wire	Hotset	Germany
14	Mesh	TSUBAKI	Japan

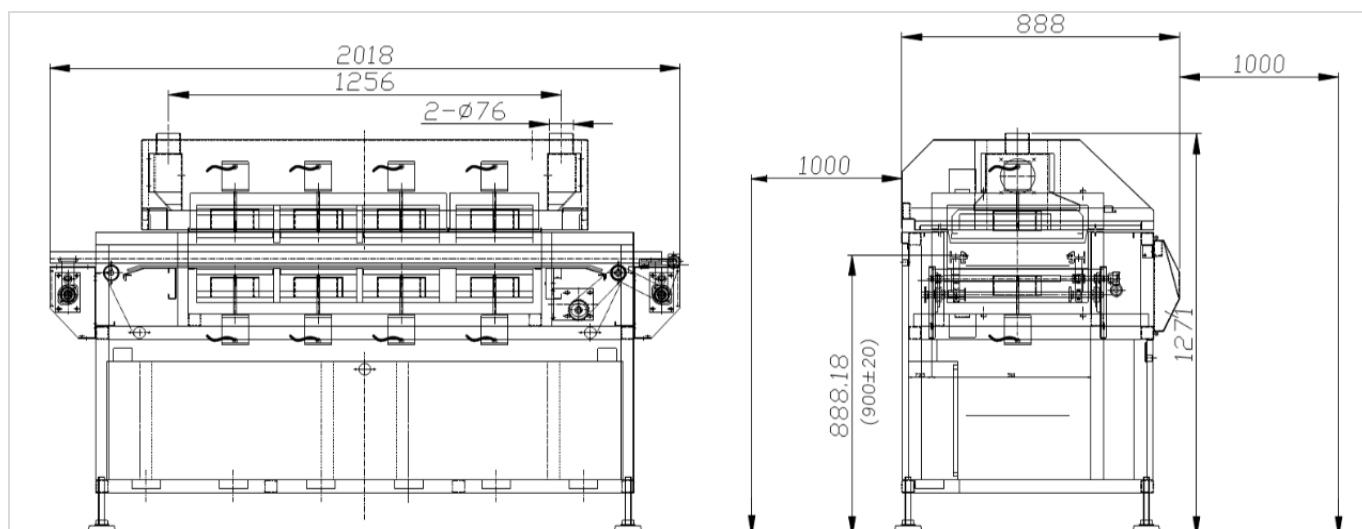
Standard Accessories:

1	Operation Software	1 set
---	--------------------	-------

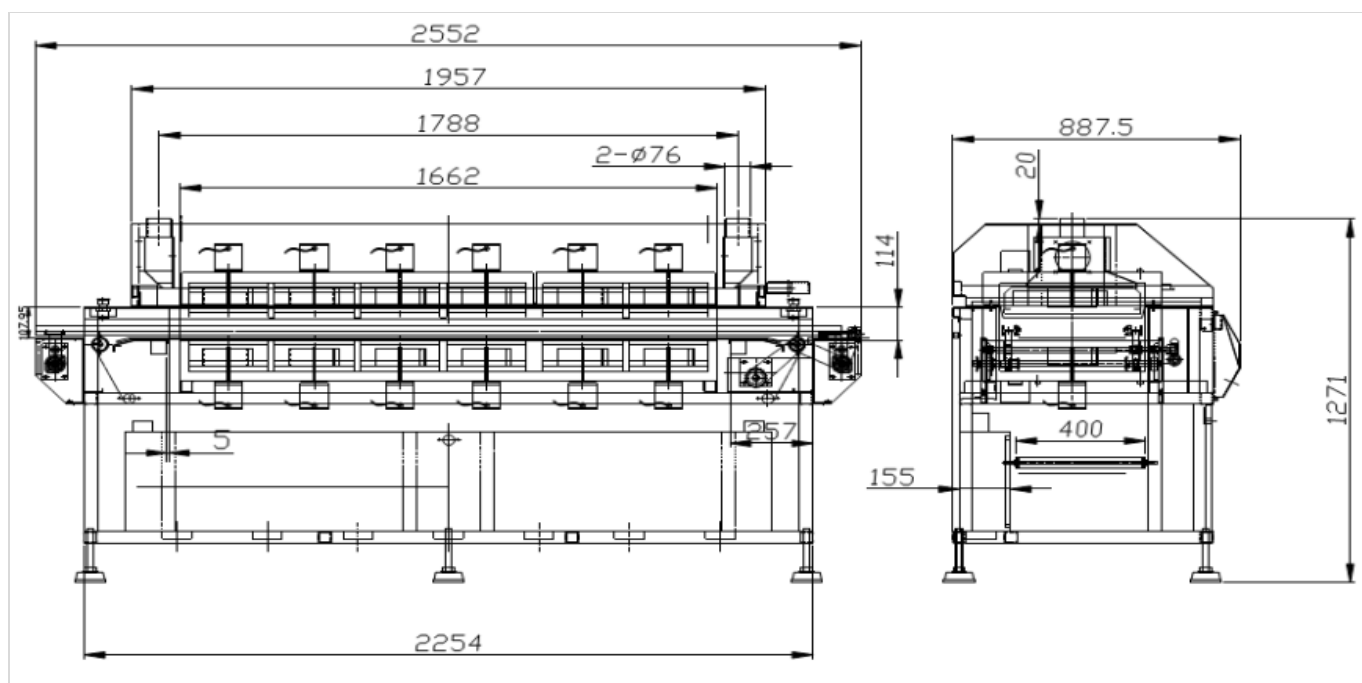
2	Fuse	1 pcs
3	Relay	2 pcs
4	Solid State Relay	1 pcs
5	K-type Test Line	1 pcs
6	Manual	1 book
7	Tool Case	1 set

* Attachments may change with product upgrade. If different, please follow the new list.

Dimensions:



T4 drawing



T6 drawing

Thanks for choosing ETA.

ETA looks forward to win-win cooperation.