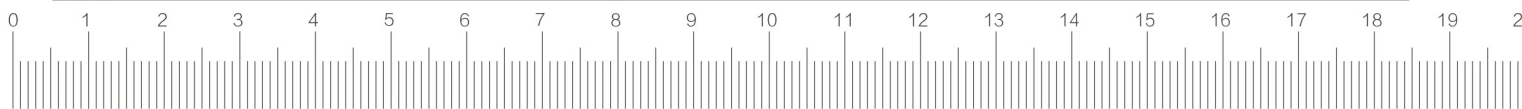


# 产品技术参数

## Product technical parameters

标准配置 Standard Configuration		规格 Specification
印刷精度 Machine Alignment Capability	≥2 Cpk@±25 μm@,6σ	
重复印刷精度 Process Alignment Capability	≥2 Cpk@±10 μm@,6σ	
循环时间 Cycle Time	7s	
最大可印刷面积 Maximum Print Area	400mm(X) x340mm(Y)	
网框尺寸 Screen Frame Size	470mm x 370mm~737mm x 737mm	
网框厚度 Screen Frame Thickness	25mm - 38mm	
印刷机框架 Printer Construction	整机一体成型框架 One piece optimized welded frame	
设备控制 Machine Control	运动控制总线控制 Motion control using CAN BUS network	
操作系统 Operation System	Windows XP, 可选配Win7 Windows XP, Win7 (option)	
操作界面 Operator Interface	17寸DELL显示屏、键盘和鼠标, DESEN V2软件, 显示器放在右边。 17"DELL display screen, keyboard and mouse and DESEN V2 software, display on the right hand side.	
多功能图像处理系统 Multi function image process system	Mark点软件测量, 二次定位, 组件识别功能 Fiducial Mark software measurement, twice position, device identification function	
刮刀压力恒定智能控制系统 Constant intelligent control system of squeegee pressure	软件设置调整刮刀压力 Pressure adjusted by software control	
钢网自动定位模块 Automatic positioning module of stencil	钢网放入钢网支撑架中, 刮刀头自动实现钢板定位 Put the stencil into the support frame, the squeegee automatically realizes the positioning of the stencil	
基板支撑定位系统 PCB support positioning system	支持等高块, 支撑pin, 支撑平台(平台靠近固定轨道边预留定位孔) Can use block, support pin, platform (platform close to the fixed track edge reserved for positioning holes)	
智能清洗系统 Intelligent cleaning system	多尺寸擦拭纸通用, 擦拭纸耗量少, 清洗剂控制模块 The different size of wipe paper can be used, less paper consumption, solvent agent control module	
设备接口 Machine Interface	SEMI Input/Output 4芯 国际标准接口 SEMI Input/Output 4 core international standard interface	
通讯接口 Connectivity	RJ-45LAN(网络)和USB2接口可用 RJ-45LAN(networking) and USB2 interface available	
三色智能LED警示灯 Three color intelligent LED warning light	可编程控制和声光报警 Programmable with audible alarm	
设备重量 Approximate Weight	1300kg含包装(设备本身+配置选项) 1300kg boxed (dependent upon configured options selected with machine) 1100kg不含包装(设备本身+配置选项) 1100kg unboxed (dependent upon configured options selected with machine)	
设备尺寸 Approximate Dimensions	1140 (长) X1360 (宽) X1505 (高) mm 1140 (L) X1360 (W) X1505 (H) mm	
说明书 Documentation	硬拷贝手册包括: Operator、安装和电气图纸。 技术手册和教程上支持操作符的功能。 Hard copy manuals comprising: Operator, Installation, and Electrical Drawings. On board technical manuals and tutorials supporting operator functions.	
高性能高精度平台 High performance and high precision platform	平台处理方式采用退火工艺+小刀快铣方式, 减少平台内金属应力残留, 长期使用后不易变形, 精度保证。 The platform processing method adopts the annealing process and the knife quick milling method, and the residual of the metal stress in the platform is reduced. Easy deformation, precision assurance.	

智能传输系统 Transfer System		规格 Specification
皮带类型 Type	U型齿轮皮带, 前轨道固定 U gear belt, front rail fixed	
ESD兼容性 ESD Compatibility	黑色运输皮带和导轨的表面电阻率 > 110Ω Black transport belts and guides with surface resistivity of greater than 110 Ω	
宽度调整 Width Adjustment	程式可调后轨道移动 Programmable motorized rear rail	
运输方向 Transport Direction	L→R, L→L, R→L, R→R	
最小基板尺寸 Substrate Handling Size (minimum)	50mm (X) x 50mm (Y)	
最大基板尺寸 Substrate Handling Size (maximum)	400mm (X) x 340mm (Y)	
基板厚度 Substrate Thickness	0.4mm - 5mm	
基板重量 Substrate Weight (maximum)	≤3kg	
基板翘曲量 Substrate Warpage	含基板厚度翘起7mm Up to 7mm including substrate thickness	
基板固定 Substrate Fixture	柔性侧夹 Flexible side clamp	
基板下方净空高度 Substrate Underside Clearance	程式可调10mm→25mm Programmable 10mm to 25mm	



# 匠心于德，凝就你我同为森

电气配置及环境要求		规格 Specification
Ⓥ	电压 Voltage	电压: 220V, ±10%, 单相50/60Hz. 220Volts +/-10%.Single phase 50/60Hz
Ⓜ	功率 Power	3kw
Ⓛ	过载保护 Over Current Protection	外部电路断路保护, ≤25A An external circuit breaker ≤25 Amps is required to be fitted in line with the machine supply
Ⓐ	气源 Air Supply	参照ISO质量标准2.3.3, 耗气量每分钟0.5L/min; To ISO standard quality class 2.3.3,Air Consumption0.5L/min
Ⓘ	温度 Temperature	25±3℃
Ⓜ	湿度 Humidity	相对湿度30% - 70% 30% - 70% relative humidity (non condensing)

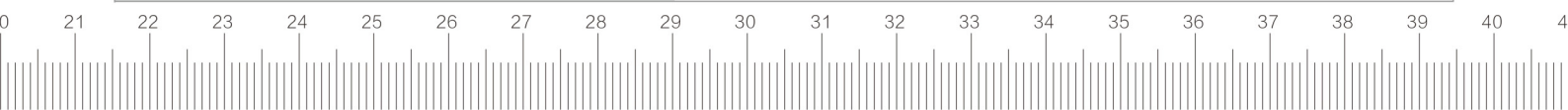
认证 Certification		规格 Specification
ⒸⒺ	CE	98/37/EC, 89/336/EEC, 73/23/EEC
Ⓐ	噪音级 Acoustic Noise Level	小于87dB Less than 87dB

制程参数 Process Parameters		规格 Specification
	刮刀压力 Print Pressure	0kg - 10kg
	印刷速度 Print Speed	6mm/sec - 200mm/sec
	印刷间隙 Print Gap	0mm - 20mm
	脱模 Substrate Separation	脱模速度:0.1 - 20mm/s Speed:0.1mm/sec - 20mm/sec 脱模距离:0mm - 3mm Distance:0mm - 3mm
	脱模方式 Separation option	先起刮刀再脱模, 先脱模再起刮刀, 保持预压力脱模 (面脱模, 线脱模) Separation after squeegee up; Squeegee up after separation; Separation by keeping squeegee on the stencil (Area Separation,Line Separation)
	适用浆料 Apply paste option	锡膏, 油墨, 银浆 solder paste, printing ink, silver paste

识别系统 Vision		规格 Specification
	视觉系统 Vision System	Mark点软件测量, 二次定位, 组件识别功能 Fiducial Mark software measurement,twice position,device identification function
	图像定位系统 Fiducial Recognition	自动对准示教, 最小识别0.1毫米的基准点 Automatic fiducial teach and find incorporating 0.1mm fiducial capture
	基准点数量 Fiducials	2个或4个mark基准点定位系统 Two or Four Fiducial Marks Alignment System
	基准点类型 Fiducial Types	□ 方形, ○ 圆形, △ 三角形, + 十字形, 用户自定义类型 □ square, ○ round, △ triangle, + cross, user-defined types
	基准点尺寸 Fiducial Size	0.1mm ~ 3mm
	基准点位置 Fiducial Locations	基板上任意位置 Anywhere on substrate
	基准点位置补偿 Fiducial Error Recovery	自动光学调整 Auto lighting adjustment 基准点自动搜寻 Auto fiducial search
	相机光源 Camera Lighting	手动调节 Manual adjustment

平台和清洗结构选项配置 Handing & Cleaner Options		规格 Specification
	最大平台尺寸 Substrate Handing Size(maximum)	长板选项—最大可延伸至460*340mm, 取像范围最大450*340mm Long board options -maximum extend to 460*340mm, CCD scope biggest 450*340mm
	网板底部清洁 Under Stencil Cleaning	最大清洁尺寸滴淋式460mm, Largest clean drops drench type 460 mm size

软件与通信 Software & Communications		规格 Specification
	软件智能备份模块 Software intelligent backup module	数据库自动备份, 软件升级后不丢失 Database automatic backup, software upgrade is not lost
	保养预警功能 Maintenance early warning function	机台丝杆, 滑块, 电机等自动提示保养讯息 Machine wire rod, slide block, motor and other automatic maintenance message
	印刷参数智能模块 printing parameter intelligent module	选择生产基板类型, 自动给出最优的参数设置 Customer select the type of production,like FPC,LED,Phone PCB... the printer can give the parameter automatically.
	锡膏自动回收系统 Recovery system of solder paste	定时或定次数软件控制刮刀将印刷行程外的锡膏回收收到印刷行程中 The fixed frequency to recovery the solder paste into the printing area.



# 选项功能 Option Function

## 锡膏量监测系统

The rest of solder paste on the stencil monitoring system

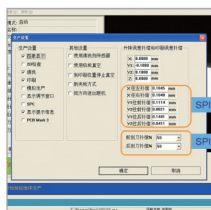
- 通过锡膏检测传感器检测前刮刀下方剩余锡膏滚动直径，智能提示客户加入锡膏。

The solder paste inspection sensor before the scraper below remaining paste rolling diameter, intelligent prompt customers to join the solder paste.

## SPI联机 SPI close loop

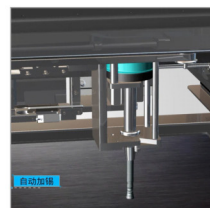
- 与SPI联机形成闭环系统，当收到SPI印刷不良的反馈信息后，机器会自动根据SPI反馈的偏移量自动进行调整，XY方向偏移可在3PCS内自动调整完成，并清洗钢网，提高印刷品质与生产效率，构成完整的印刷反馈系统。

Form a closed loop system with SPI on line, when after receiving the SPI printing bad feedback, the machine will automatically adjust automatically according to the offset of SPI feedback, x, y direction deviation can automatically adjust to complete within 3 PCS, and clean Stencil, improve printing quality and production efficiency, form a complete printing feedback system.



## 自动加锡功能 Automatic supply solder paste function

- 通用锡膏罐直接添加  
General solder paste pot add directly
- 可定时定次数添加  
Can decide timing times add
- 可实时监控网板上锡膏滚动直径，触发自动添加功能  
Can be real-time monitoring the roll diameter of the solder paste on screen, trigger automatically add functionality



## UPS断电保护 UPS power off protection

- 断电后一定时间（15分钟）内PC可以保持供电，保护生产数据。并提供两通道功能：控制及直通。
- After power off a certain time (15 minutes) PC can keep the power supply, the protection of production data. And provides two channel functions: control and through

## 刮刀压力反馈系统 Squeegee pressure close loop feedback system

- 刮刀压力闭环反馈系统：两组独立的刮刀，
  - 高精度马达与刮刀轴直接连接驱动，
  - 实时压力显示及回馈
- Squeegee Pressure Closed Loop Feedback System: Two groups of independent scraper, High precision motor drive directly connected to scraper shaft, Real-time pressure display and feedback

## 智能温湿度控制系统 Intelligent temperature and humidity control system

- 顶置式温度可调，湿度可显控制系统；  
Temperature can be shown and adjustable on the up set system
- 外置式温湿度一体化恒温恒湿控制系统  
Humidity can be shown and adjustable on the side set system

## 自动点胶功能 Automatic dispensing function

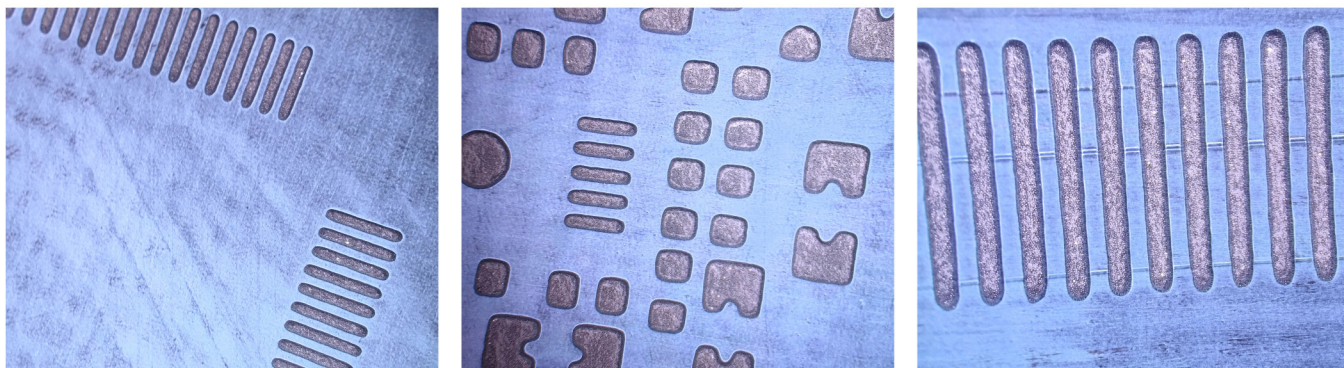
- 可实现打点，划线，区域填充  
It can realize dot, line, area filling
- 最小点直径0.8mm  
The minimum dispensing diameter of 0.8 mm

## 条码识别功能 Bar code recognition function

- 可以扫描客户PCB板上的一维码或二维码，并将相关信息记录下来，与客户的MES系统对接。可同时满足两个扫描端口。
- 固定式扫描
  - 手持式扫描
  - 自动扫描（支持印刷面有条码）
- Can scan one dimensional code or two-dimensional code on the customer PCB board, and record the relevant information, and the customer's MES system docking. Two scanning ports can be satisfied simultaneously.
- Fixed scan
  - Hand-held scanning
  - Automatic scanning (support for printing surface with bar code)

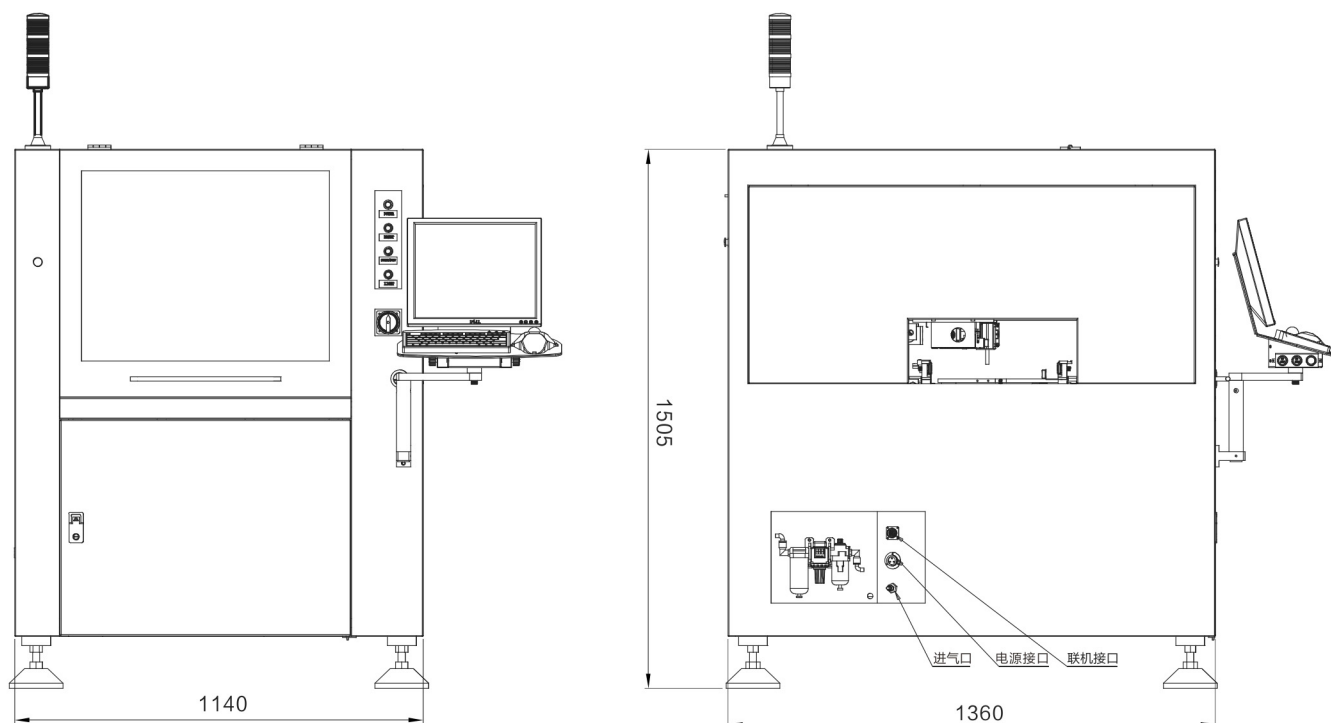
Printing effect sharing

印刷效果分享



Product size

产品尺寸图





[www.desen-sz.com](http://www.desen-sz.com)



---

深圳 SHENZHEN	北京 BEIJING	厦门 XIAMEN	苏州 SUZHOU	青岛 QINGDAO
重庆 CHONGQING	上海 SHANGHAI	郑州 ZHENGZHOU	美国 AMERICAN	日本 JAPAN

---

深圳德森精密设备有限公司  
SHENZHEN DESEN PRECISION MACHINE CO.,LTD