

# Super Dry

World Leading Technology  
More Than 40 Years

**New!**

**MSD**

Medium Temperature / Low Humidity

**New!**

**SDU**

0.5%RH, fast dehumidification

Silicon • Electronic equipment  
Semiconductor  
Electronic Components • Food  
Drug and Precision Machinery  
• Optical Instruments

**Revolution of  
Low Humidity  
Storage!!**

- 1 Room temp (25 °C)~ 50°C + ≤5%RH • MSD Series
- 2 Fast dehumidification and recovery 0.5%RH • SDU Series
- 3 Ultra-low Humidity 1%RH • 01 Series
- 4 Ultra-low Humidity 2%RH • 02 Series
- 5 High cost performance Humidity 3%RH • 03 Series
- 6 Cabinets made of all stainless steel 2%RH • SUS Series
- 7 Long Term Storage Humidity 20%RH • Auto Dry
- 8 Acrylic Nitrogen Cabinet



MSD-1206-01

## MSD Series

Newly Developed

Temperature:  
Room Temperature(25°C)~50°C  
Humidity: ≤5%RH

Chips Needed to be Baked  
in Cabinet  
Components that Can not be  
Baked at High Temperature  
Tape Goods



SDU-702-00

## SDU Series

Newly Developed

6 models  
Humidity:0.5%RH

Inner Humidity 0.5%  
Continuous to Keep  
(Unloaded at Environment  
Humidity of 50~60%)



SD-1104-02

## 02 Series

7 models  
Humidity:2%RH

Inner Humidity 1%  
Continuous to Keep  
(Unloaded at Environment  
Humidity of 50~60%)

## N2 Saving Dry Cabinet



Electronic Dry Cabinet  
Combined with N2  
Saving Purging System  
Fast Dehumidification  
and Recovery

Available for all models

The World's Leading Automatic Dry Cabinet Supplier

**Totech**

Manufactured by  
TOYOLIVING CO.,LTD.



2017

## History of Totech

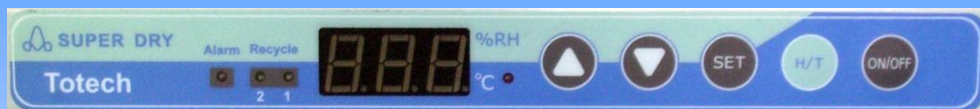
- **1974** The foundation of Toyo Living Co., Ltd. The development of dry unit started.
- **1976** Instead of using silica gel desiccant, the dry unit, which is installed with the new desiccant, has been firstly come into the Japanese market through agents in the field of physical and chemistry.
- **1982** The manufacturer of home electronic applicant, TOSHIBA bought our dry unit, and sold out 13,500 sets only within three months from June to August. (It was promoted on 30-second TV commercial once )
- **1983** With the installation of Shape Memory Alloys (SMA), the dry unit has been firstly come into the optical market in Japan.
- **1987** As the usage of dry cabinet (Auto Dry, with humidity setting 30~50%RH) shift from the optical market to the field of semiconductor, the humidity setting is verified to 3%RH, 2%RH, and 1%RH. Besides, the air clean dry cabinet with a HEPA filter is also developed at this time.
- **Beginning of 1990s** To meet the storage of semiconductor, the temperature baking dry cabinet is developed, for both dehumidifying and medium temperature baking. (Room Temperature 50 degrees)
- **Beginning of 21 century** Enter the market of Europe and America.
- **2006** Totech Global Co., Ltd. was established to take in charge of the overseas sales and service of Toyo Living products.
- **2008** Totech Shanghai Co., Ltd. was set up to further expand the global market of Totech dry cabinets.



Office



Factory

**SUPER DRY FEATURES****1 Digital Control Panel Adjusting Humidity**

Electronic  
Effective  
Energy-saving

**2 Features of Super Dry Accord to or even Exceed IPC/JEDEC J-STD-033C****3 Perfectly ESD Safe- Fit for Storage of Semiconductor, Electronic Component, Accords to ESD-IEC61340-5-1****4 Warranty Period 2 Years****Series & Features****★ MSD Series**

Medium Temperature: Room temperature (25°C)~50°C  
Low Humidity: ≤5%RH

MSD Max.(50 °C) Forced convection of inner hot air  
Semiconductor, electronic components, powder material, tape material, etc.

**★ SDU Series**

Reach and keep 0.5%RH

Newly made dry units U-2005F, suit for frequent door opening

**★ 01 Series**

Inner Humidity Keeps at 1%RH

Dry storage of IC, silicon wafers, aerospace related instruments and tools, optical components, etc  
Fast recovery after door open-and-close

**★ 02 Series**

Steady Low Humidity- Long Term Storage

Average door open-close 1~2 times a day keeps at 2%RH, save energy appr.50%

**★ 03 Series**

Low Humidity: <3%RH

High cost performance  
Reach <3%RH, fit for medium/long term storage of PCB and IC.

**★ SUS Series**

2%RH, made of all stainless steel, suit for clean room

**★ 20 Series**

Medium Humidity: 20~50%RH

Low cost, reach 20%RH, fit for medium/long term storage.

**★ Auto Dry**

Inner Humidity: 20~50%RH

Capacity 1160L~121L

★Suitable for Universities, Institutes, Labs, Food, etc

**★ Acrylic N<sub>2</sub> Cabinet**

Dry Unit Optional, <3% or 20~50%RH

Transparent Nitrogen Cabinet  
Easy for observation

**MSD Series****Fast Dehumidifying**

Temperature: Room temperature (25°C)~50°C Humidity: ≤5%RH

**Made in Japan****SDM-1206-01****MSD-1102-02****MSD-701-02****MSD-301-02****Advantages to Items Stored**

1. Mild baking: Cause no flaws to SMDs during dehumidification.
2. No need of pre-baking: To prevent the defective products
3. Moisture prevention: To prevent moisture absorption in one hour after taken from the cabinet.

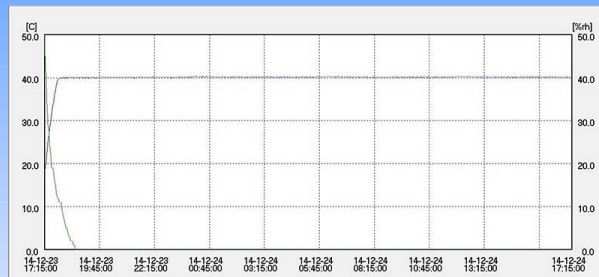
**Stainless steel  
body available**

※ This product has the function of heating and dehumidifying, has no function of refrigerating

- 1 Avoid high temperature(>100°C) baking, easy for operation
- 2 Control and show inner humidity on the digital panel
- 3 Accord to IC package management standard IPC/JEDEC J-STD-033C
- 4 Warranty period 2 years

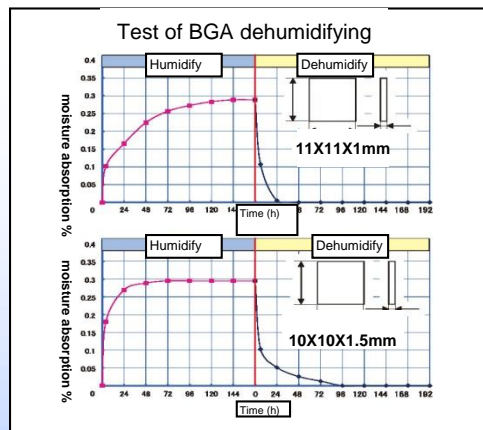
**Heating to Max 50°C**

Hot air blows from bottom to the top, making the temperature even inside cabinet.  
Precise sensor installed, digital control panel, operation easily.  
Items cannot be stored on the bottom (air outlet) of cabinet to prevent hot air to be blocked.

**[ Note ]** ※Specifications are subject to change.

- ◆ Improved heat insulation(MSD-1102-02 Max.50°C)  
Operate under forced inversion of inner hot air and low humidity (≤5%RH), baking dry.
- ◆ Baking for semiconductor, PCB, IC and LED, accelerate drying, Improve production efficiency.

## Dehumidifying of BGA



Model	SDM-1206-01	MSD-1102-02	MSD-701-02	MSD-301-02
External Dimension W·D·H (mm)	1240x810x1860	1316x702x1897	660x687x1897	660x687x1172
Internal Dimension W·D·H (mm)	1198x658x1569	1217x462x1447	560x478x1447	560x478x722
Capacity (L)	1190	885	450	260
Weight (kg)	235	225	145	126
Power Consumption	Mean 350.7W/h	Max. 1800W/h	Max. 1500W/h	Max. 1500W/h
Rated Voltage	AC100V, 50/60Hz	AC90~265V, 50/60Hz	AC90~265V, 50/60Hz	AC90~265V, 50/60Hz
Body Material	Steel with ESD safe paint	Steel with ESD safe paint	Steel with ESD safe paint	Steel with ESD safe paint
Shelves	5pcs	5pcs	5pcs	2pcs

**SDU Series 0.5%RH (Digital Control Panel: 0.5%RH)**

**Dry Unit ×2**



**Superior Recovery after Frequent Door Openings**

SDU series are equipped with Toyo newly developed dry unit U-2005F, to reach and keep ultra-low humidity min. 0.5%RH which meets IPC/JEDEC J-STD-033C demands, and provide the most effective solution to

1. Micro-cracks in Integrated Circuits like QFP and BGA
2. Delaminations in Printed Circuit Boards and Rework Devices
3. Defects Caused by Heating in Lead-free SMD Devices

IPC/JEDEC J-STD-033C Requirement					TOTECH Requirement
SMD, Handling	MSL	Exposure Time	≤10%RH	≤5%RH	≤0.5%RH
Pause Floor Life	2, 2a, 3	/	√	√	★
	4, 5, 5a	/	X	√	★



SDU-1206-00



SDU-1204-00



SDU-702-00



SDU-302-00

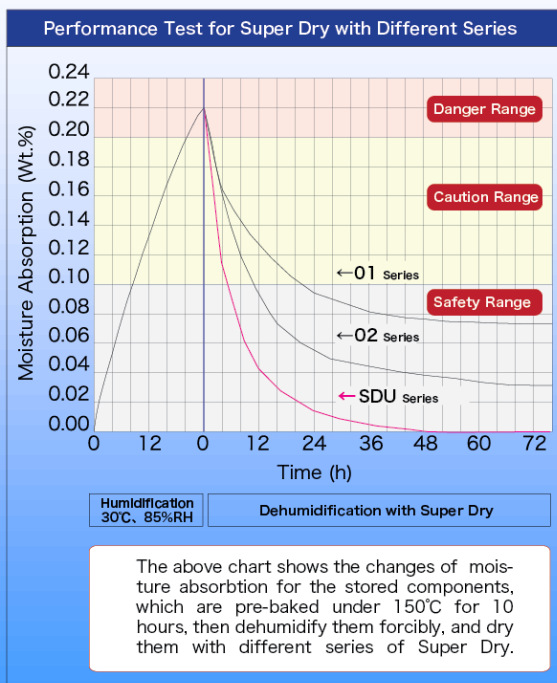
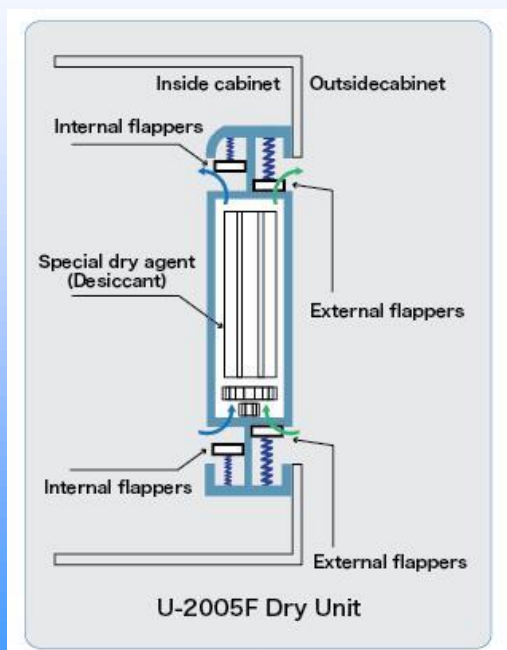


SDU-502-00



SDU-252-00

Model	SDU-1206-00	SDU-1204-00	SDU-702-00	SDU-302-00	SDU-502-00	SDU-252-00
External WxHxD(cm)	120x184x67		62x184x78	50x123x64	88x90x74	88x90x38
Internal WxHxD(cm)	119x156x62		61x156x73	49x116x59	87x83x69	87x83x33
Capacity(L)	1160		680	340	510	252
Weight(kg)	167	162	117	67	67	46
Mean Power Consumptin	56W/h=40.4kW/month			56W/h=40.4kW/month		
Rated Voltage	AC220V, 50/60Hz (Other voltage is optional)					
Material	1.2mm steel body with ESD safe paint and Conductive Glass Windows					
Stainless Steel Shelves	5 pcs			7 pcs	3 pcs	





## Superior Features of SDU Series

### Dry unit U-2005F by Toyo Living

#### High Reliability and Stability

Till today more than 55,000 Units have been supplied and Used in the world, especially in Japan where strict regulations Exist. Low humidity, Quick recovery system works.



**ESD Safe**

6 methods for 100% perfect EPA!

- ① Conductive coating
- ② Stainless steel shelves
- ③ ESD safe glass window
- ④ Wrist strap
- ⑤ Earth point for wrist strap
- ⑥ 1M $\Omega$  earth resistance wire

## SUPER DRY



Can enable your best achievement in production and development, with highest security and safety.

#### Digital Panel

Simple and easy to set humidity  
Temperature can also be indicated



#### Humidity Sensor

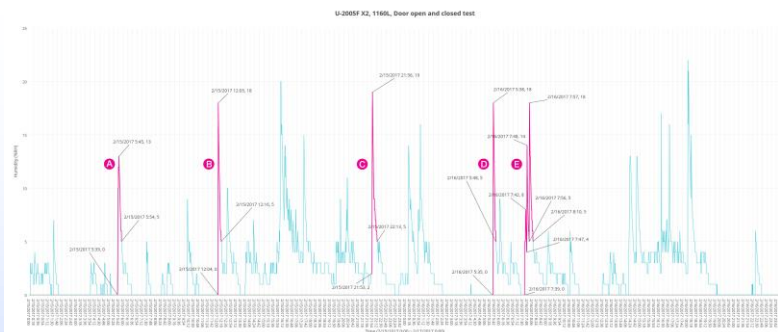
High end, high quality sensor to transmit Data to digital panel (Calibratable)

Only Super Dry by original TOTECH can supply fully Satisfied ESD FREE cabinets, 100% adjustment to IEC-61340-5-1.

## Fast dehumidification

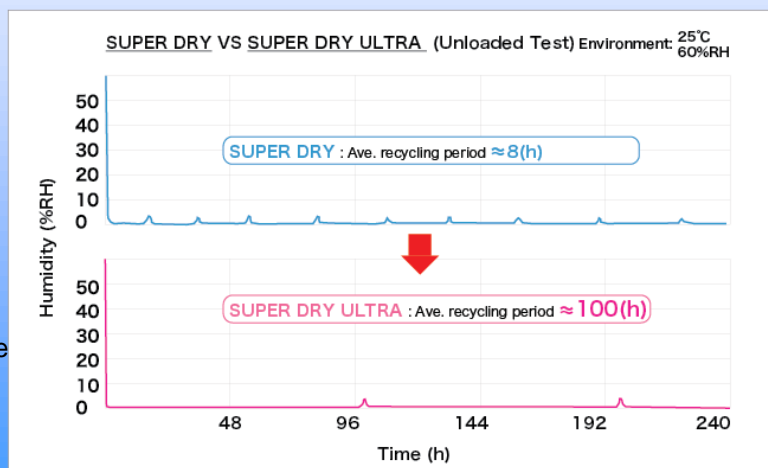
### <Suitable for production process>

SDU is installed 2 dry units U-2005F, and when one is regenerating, the other will keep on absorbing moisture to make sure the humidity will drop fast after door open and close.



## Keeping constant humidity

SDU is equipped with the latest developed dry units, and it can keep higher moisture absorption even under the humidity below 5%RH with its highly efficient regenerating and precise controlling, to make the dry agent absorb moisture constantly.



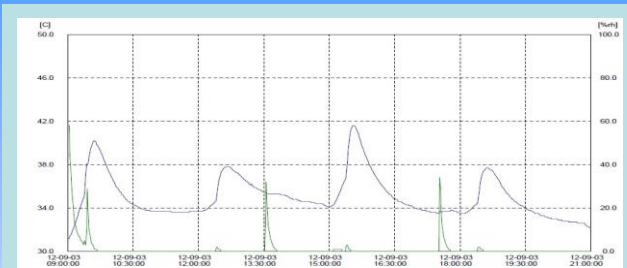
**01 Series 1%RH (Digital Control Panel: 1%RH)**

**Dry Unit ×2** 

**Superior Recovery after Frequent Door Openings**

01 series are equipped with 2 powerful patented dry units to reach ultra-low humidity min. 1%RH which meets IPC/JEDEC J-STD-033C demands, and provide the most effective solution to

1. Micro-cracks in Integrated Circuits like QFP and BGA
2. Delaminations in Printed Circuit Boards and Rework Devices
3. Defects Caused by Heating in Lead-free SMD Devices



**Door open-and-close test**



HSD-1106-01

HSD-1104-01

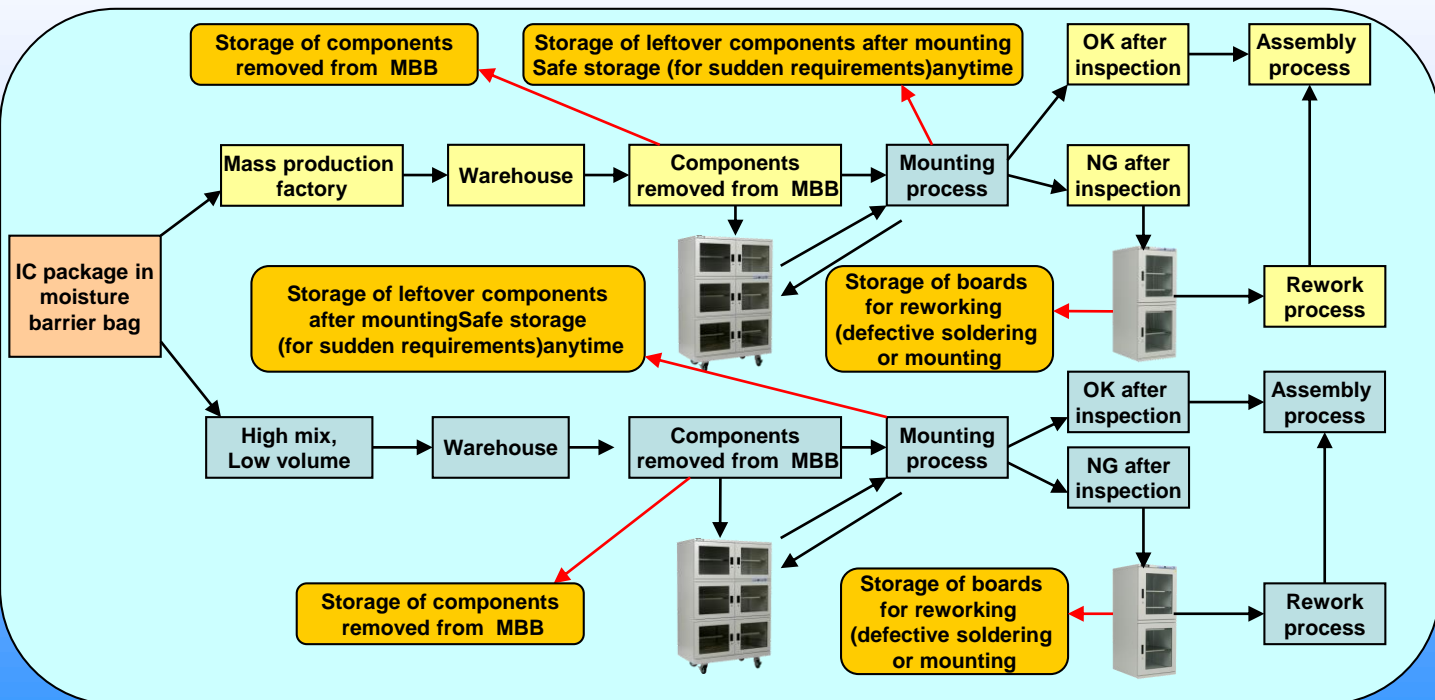
HSD-702-01

HSD-302-01

HSD-502-01

HSD-252-01

Model	HSD-1106-01	HSD-1104-01	HSD-702-01	HSD-302-01	HSD-502-01	HSD-252-01
External WxHxD (mm)	1200x1840x670		620x1840x780	500x1230x640	880x900x740	880x900x380
Internal WxHxD (mm)	1190x1560x620		610x1560x730	490x1160x590	870x830x690	870x830x330
Capacity (L)	1160		680	340	510	252
Weight (kg)	167	162	117	67	67	46
Mean power Consumption	56W/h=40.4kW/month			56W/h=40.4kW/month		
Rated voltage	AC220V, 50/60Hz (Other voltage is optional)					
Material	ESD safe painted steel body and shelves					
Shelves	5 pcs			7 pcs	3 pcs	



## 02 Series (Digital Control Panel: 2%RH )

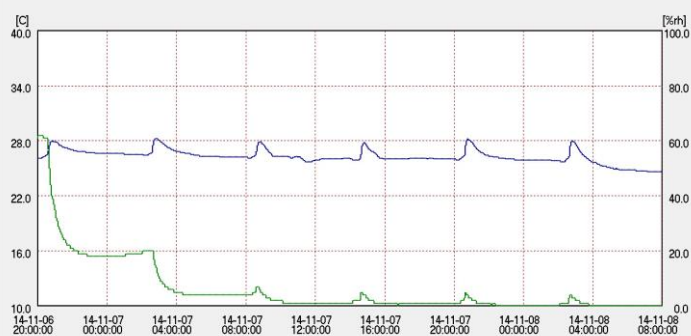
Dry Unit ×1



### Medium to Long Term Constant Ultra-Low Humidity Storage

02 series are equipped with 1 patented dry unit to constantly maintain the ultra-low humidity to min. 2%RH, to meet IPC/JEDEC J-STD-033C demands, and are ideal for the moisture proof and anti-oxidation storage of the following items.

- 1.Storage of all kinds of Interacted Circuits and Silicon Wafers etc
2. Storage of PDP Inspection Equipments and Liquid Crystal Cleaning Equipments etc
- 3.Storage of Aerospace related instruments and Tools
- 4.Storage of Optical Equipments and Digital Media
- 5.Storage of Chemicals, Medicine, Cultural Assets, etc



02 series unloaded test



SD-1106-02



SD-1104-02



SD-702-02



SD-302-02



SD-502-02



SD-252-02

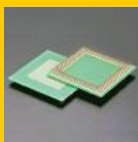


SD-151-02

Model	SD-1106-02	SD-1104-02	SD-702-02	SD-302-02	SD-502-02	SD-252-02	SD-151-02
External WxHxD (mm)	1200x1840x670		620x1840x780	500x1230x640	880x900x740	880x900x380	500x630x580
Internal WxHxD (mm)	1190x1560x620		610x1560x730	490x1160x590	870x830x690	870x830x330	490x560x530
Capacity (L)	1160		680	340	510	252	145
Weight (kg)	160	155	110	60	60	39	29
Power Consumption	28W/h			28W/h			21W/h
Rated Voltage	AC220V, 50/60Hz (Other voltage is optional)						
Material	ESD safe painted steel body and shelves						
Shelves	5pcs			7pcs	3pcs		

### Applications in Production Process

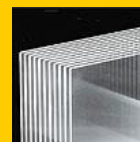
#### 1) IC packages



#### 2) Silicon Wafer



#### 3) Liquid Crystal Glass (LCG) Board



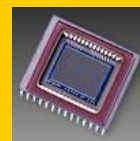
#### 4) PCBs



#### 5) Ceramics



#### 6) Optical Fiber. CCD etc





**03 Series (Humidity Control: <3%RH)**



**ESD Safe**

**Super Dry Newly Designed**

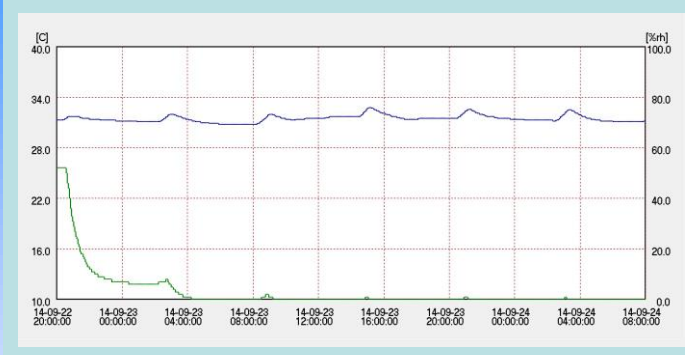
Constantly Dehumidifying, reaching min. <3%RH

LCD Digital Hygrometer

Cost Low

Meet the requirement of

**IPC/JEDEC J-STD-033C**



CSD-1106-03



CSD-1104-03



CSD-702-03



CSD-302-03



CSD-502-03



CSD-252-03



CSD-151-03

Model	CSD-1106-03	CSD-1104-03	CSD-702-03	CSD-302-03	CSD-502-03	CSD-252-03	CSD-151-03
External WxHxD (cm)	120x184x67	120x184x67	62x184x78	50x123x64	88x90x74	88x90x38	50x63x58
Internal WxHxD (cm)	119x156x62	119x156x62	61x156x73	49x116x59	87x83x69	87x83x33	49x56x53
Capacity (L)	1160	1160	680	340	510	252	145
Weight (kg)	160	155	110	60	60	39	29
Voltage	AC220V, 50/60Hz (Other voltage is available)						
Material	ESD safe steel body& shelves, and conductive doors						
Shelves	5pcs			7pcs		3pcs	

**Feeder Series ESD safe**

(Ask for customized dimensions)

**Feeder Series (ESD Safe)**

Perfect Ultra-Low Humidity Storage for  
Tape Feeder at 1%RH

Deep Design Handles Tape Feeders

Tape feeder can be stored  
directly inside dry cabinet



Most suitable for trolleys  
with feeder to put inside  
cabinet directly, cabinet  
loading capacity 200kgs.

Humidity control 1%RH by  
digital control panel.  
Two trolleys can be stored  
inside.

External Dimension	W1200×H1840×D960(mm)
Internal Dimension	W1190×H1506×D910(mm)
Capacity	1708(L)
Weight	197(kg)
Power Consumption	56W/h
Shelves	5 pcs
Material	Steel body



SDF-1104-01



SDF-1402-01

External Dimension	W1300xH1290xD1090(mm)
Internal Dimension	W1250xH1205xD952 (mm)
Capacity	1400L
Weight	200(Kg)
Power Consumption	56W/h
Shelves	None
Material	Steel body with ESD safe paint



**TOTECH SUPER DRY****NEW!****Stainless Steel Cabinet****2%RH (1%RH available)****Made of Stainless Steel**

Cabinet body made of 1.5 mm thick stainless steel SUS304, most suitable for ultra low humidity storage in clean rooms

**ESD Safe**

5 methods for 100% perfect EPA!

- ①Stainless steel body
- ②Stainless steel shelves
- ③Conductive windows
- ④1MΩearth resistance wire
- ⑤Earth point for wrist strap &Wrist strap

**SUPER DRY**

Can enable your best achievement in production and development, with highest security and safety.

**Digital Panel**

Simple and easy to set humidity  
Temperature can also be indicated

**Humidity Sensor**

High end, high quality sensor to transmit Data to digital panel (Calibratable)

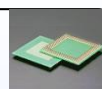
**Engine Developed by Toyo Living****Powerful Dry Unit**

**High Reliability and Stability**  
humidity, quick recovery system works.

Only Super Dry by original TOTECH can supply fully satisfied ESD FREE cabinets, 100% adjustment to IEC-61340-5-1.

**SUS-1106-02****SUS-702-02****SUS-480-02****Application example**

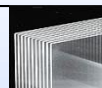
1) IC packages



2) Silicon Wafer



3) Liquid Crystal Glass (LCG) Board



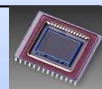
4) PCBs



5) Ceramics



6) Optical Fiber. CCD etc



Model	SUS-1106-02	SUS-702-02	SUS-480-02
External WxHxD (mm)	1200x1840x670	620x1840x780	600x1225x760
Internal WxHxD (mm)	1190x1560x620	610x1560x730	589x1035x620
Capacity (L)	1160	680	388
Rated Voltage	AC220V, 50/60Hz (Other voltage is optional)		
Material	Stainless steel body and shelves, conductive doors		
Stainless Steel Shelves	5 pcs	5 pcs	3 pcs

**20 Series (Humidity Control: 20~50%RH)**

**Long Term Storage**

**Newly Designed**

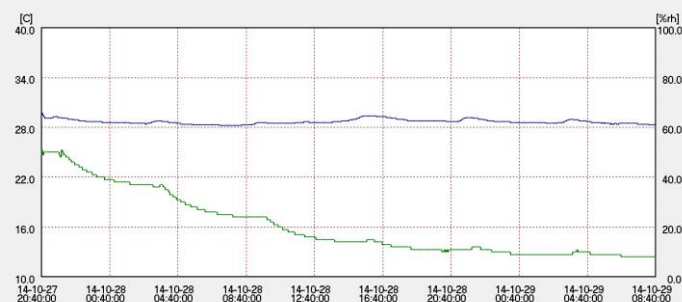
**Best choice for factories, labs and universities**

Constantly Dehumidifying, 20%~50%RH

LCD Digital Hygrometer

Cost Low

ESD Safe Function Optional



CSD-1106-20



CSD-1104-20



CSD-702-20



CSD-302-20



CSD-502-20



CSD-252-20



CSD-151-20

Model	CSD-1106-20	CSD-1104-20	CSD-702-20	CSD-302-20	CSD-502-20	CSD-252-20	CSD-151-20
External WxHxD(cm)	120x184x67	120x184x67	62x184x78	50x123x64	88x90x74	88x90x38	50x63x58
Internal WxHxD(cm)	119x156x62	119x156x62	61x156x73	49x116x59	87x83x69	87x83x33	49x56x53
Capacity(L)	1160	1160	680	340	510	252	145
Weight(kg)	160	155	110	60	60	39	29
Voltage	AC220V, 50/60Hz (Other voltage is available)						
Material	Steel body and shelves						
Shelves	5pcs			7pcs	3pcs		

**Pass Box Design (Ask for details)**

Totech Super Dry is available to be made to pass box design.



SDP-1208-01

**SDC Series ESD Safe**

HEPA Clean cabinet  
With 6 doors is available



SDC-1204-01

**HEPA Clean Cabinet (ESD Safe)**

Equipped with HEPA filter and dry unit, controlling cleanliness and humidity simultaneously. Air cleanliness class 100, humidity 1%RH.

External Dimension	W120 xH184 xD80 (cm)
Internal Dimension	W119xH156xD62 (cm)
Capacity	1100L
Weight	193(Kg)
Power Consumption	56W/h
Shelves	5 Stainless Shelves
Material	Steel Body



# Most Economic Choice for Long Term Storage



ASD-1006



ED-508



ED-268



ED-138

Model	ASD-1006	ED-508	ED-268	ED-138
External (WxHxD)cm	120x184x69	88x90x76	88x90x40	44x90x40
Internal (WxHxD) cm	119x156x62	87x84x70	87x84x34	42x84x29
Capacity (L)	1160	510	252	121
Weight (kg)	155	58	33	21
Power Consumption	12.6W/h	6.3W/h		1.9W/h
Voltage	AC220V, 50/60Hz, ( Other voltage is available)			
Material	Steel body with gray painting			
Steel Shelves	5 pcs	3 pcs		

Totech Auto Dry flexible setting 20%~50%RH, fit for long term storage.

1. Storage of micro-films and positive/negative films
2. Storage of antiques and ancient documents
3. Storage of electronic devices, PCB and IC packages before removing from moisture barrier bag
4. Storage of powdered medicines and water solution
5. Storage of micro-lens and microscope lens etc

Auto Dry Unloaded Testing



## Storage of Metal Objects and Tools

**Recommended Humidity Level: Lower than 40%**



Rust and error on the internal precision instrument can be prevented by storing commercial measuring instruments and other precision equipment, special tools, weapons, home equipment with metal parts in a low humidity.

## Seeds

**Recommended Humidity Level: 30~ 50%**

**Desirable Humidity Level: Lower than 10%**



There is a strong relationship between seed germination with the moisture level of seed storage environment. A low humidity environment and prevention against water absorption will lead to high germination and growth rate.

## Powders

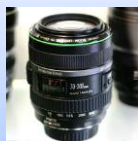
**Recommended Humidity Level: Lower than 40%**



Any powder material for scientific, industrial, medial or household use can be protected from moisture absorption and chemical reaction by storing in a low humidity environment.

## Camera Lenses

**Recommended Humidity Level: 50%**



Mold can be prevented on camera lenses, microscopes, binoculars and photography equipment by storing in an Auto Dry cabinet.

## Stamps, Photos, Albums

**Recommended Humidity Level: 30%~50%RH**

**Prevent discoloration and yellowing.**



Humidity is one of the main causes of yellowing and discoloration of stamps and photos. They should be stored in a humidity level of 30~50%, not too high or too low.

## Antiques, Arts

**Recommended Humidity Level: 30%~55%RH**



The hot summer and dry winter environment must be overcome to maintain the value of the items.



**Acrylic Nitrogen Cabinet****Transparent Acrylic Cabinet**

N2 set pre-installed, dry unit 3% or 20%

**Fast dehumidification**

Developed out of a robust acrylic material, the Super Dry Acrylic Series is engineered to achieve 3% RH control. Equipped with an N<sup>2</sup>-Set, the series can be used to store any stock commonly used in laboratories or electronics in a nitrogen atmosphere. Transparent acrylic cabinet serves clear observation of items stored inside, such as powder, chemicals, antiques, and so on.

**ESDA Series ESD safe, 3%RH****Digital panel optional**

ESDA-800S



ESDA-400S



ESDA-200S



Precise Hygrometer

Aluminium frame and  
Acrylic bodyStainless steel shelves  
ESD safe

Light, easy to remove

Transparent design,  
Easy for observationN2 manual system  
pre-installed

Model	ESDA-800S	ESDA-400S	ESDA-200S
External WxHxD(mm)	1152x1692x517	574x1692x606	574x768x549
Internal WxHxD(mm)	1140x1470x487	561x1470x487	559x737x487
Capacity	820 L	400 L	220 L
Weight	85 kg	53 kg	20 kg
Stainless Steel Shelves	10pcs, loading 20kg/shelf	5pcs, loading 20kg/shelf	2pcs, loading 20kg/shelf

**SDA Series****20%RH**

SDA-800S



SDA-400S



SDA-200S

Model	SDA-800S	SDA-400S	SDA-200S
External WxHxD(mm)	1152x1692x517	574x1692x606	574x768x549
Internal WxHxD(mm)	1140x1470x487	561x1470x487	559x737x487
Capacity	820 L	400 L	220 L
Weight	85 kg	53 kg	20 kg
Stainless Steel Shelves	10pcs	5pcs	2pcs

**Camera cabinet 25~55%RH**

AD-50



ED-106



Super Case



- ❖ Set humidity value precisely, display humidity and temperature value
- ❖ Set the humidity and door open alarm
- ❖ Set the nitrogen purging time
- ❖ Lock the panel to avoid unintended changes of setting
- ❖ Sensor calibration



❖ Extra shelf

Greatly increase the usable space inside Super Dry



❖ SMD single rack (stainless steel)

Suitable for storage of components on tape and reel, can pull out on rail



❖ SMD double rack (stainless steel)

Suitable for storage of components on tape and reel, can pull out on rail



❖ Humidity/ Door open alarm buzzer

Alarm buzzer sounds when its internal humidity/door open time exceeds set value



❖ Humidity alarm light

Alarm light flashes and sounds when its internal humidity exceeds set value



❖ Independent Nitrogen purge system (Model TN2-02)

Effective usage of  $N_2$  combined with Super Dry, help to accelerate the recovery time and oxidation prevention. Set the buttons on  $N_2$  purge system itself



❖ Nitrogen valve (Model: HN2-01)

Simple  $N_2$  flow meter 0-25L/min adjustable



❖ Nitrogen auto purge system (Model AN2-03)

Effective usage of  $N_2$  combined with Super Dry, help to accelerate the recovery time and oxidation prevention. Set on digital control panel



❖ Adjustable legs

Available for effective stabilization



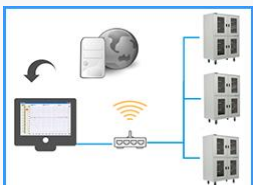
❖ Wrist strap connection

Allows grounding while handling ESD sensitive materials



❖ Data logger with software (model MR6662)

Data logging humidity and temperature, can read and output data by software with a PC



❖ Network system for humidity and temperature (including module and software)

Far distance humidity and temperature monitoring



❖ Castors(4 pcs)

To move the cabinet on floor easily

\*Model No. and dimensions are subject to change.

